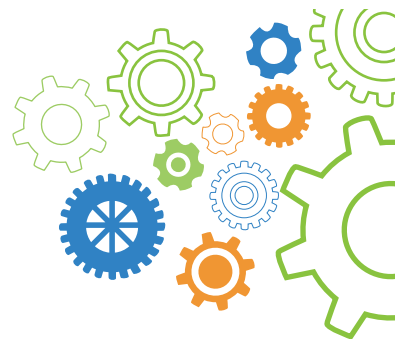




## PINEBRIDGE TRAINING & CONSULTING (PBTC) RISK-BASED TRAINING CALENDAR, 2026

Date		Cost	Venue
20th–22rd January	<b>Managing Project Risks</b> <i>"Master practical techniques to assess, control, and minimise project risks, driving reliable and successful project outcomes"</i>	KES 75,000+VAT	Naivasha
10th -12th February	<b>Culture: The Missing Link in Risk Management</b> <i>"Building a Risk-Aware Culture, From Policy to Practice"</i>	KES 75,000+VAT	Machakos
24th – 26th February	<b>Effective Risk Leadership</b> <i>"A practical course equipping leaders to align risk with strategy, strengthen decision-making, and build resilient, risk-aware organisations."</i>	KES 70,000+VAT	Naivasha
10th -13th March	<b>Fundamentals of Risk Management</b> <i>"Build a strong risk management foundation with IRM's FoRM using practical tools and ISO 31000 best practices to boost decisions and resilience."</i>	KES 75,000+VAT	Nairobi
14th – 17th April	<b>Business Continuity Management BCMS Training</b> <i>"A practical course to help you build real-world resilience with hands-on BCMS training to minimise risks and maximise continuity."</i>	KES 75,000+VAT	Machakos
25th – 27th May	<b>Effective Board Leadership – In-house Course</b> <i>"Equip your board to lead with clarity, accountability, and impact"</i>	KES 95,000+VAT	Naivasha
2nd -5th June	<b>Advanced Risk Management</b> <i>"Master advanced risk tools to anticipate threats, strengthen resilience, and drive confident, strategic decision-making"</i>	KES 80,000+VAT	Mombasa
9th 12th June	<b>Effective Risk Leadership</b> <i>"A practical course equipping leaders to align risk with strategy, strengthen decision-making, and build resilient, risk-aware organisations."</i>	KES 75,000+VAT	Mombasa
21st – 24th July	<b>Internal Audit &amp; Risk Assurance Training</b> <i>"Practical, hands-on training in internal audit and risk assurance strengthens controls, manage risks, and boosts compliance."</i>	KES 75,000+VAT	Machakos
11th – 13th August	<b>Fundamentals of Risk Management (Rwanda Edition)</b> <i>"Build a strong risk management foundation with IRM's FoRM using practical tools and ISO 31000 best practices to boost decisions and resilience."</i>	USD 890	Kigali, Rwanda.



<b>25th – 28th August</b>	<b>Enterprise Risk Solutions for the Financial Sector</b> <i>"Protect your institution from fraud, defaults, and compliance pitfalls"</i>	<b>KES 75,000+VAT</b>	<b>Nairobi</b>
<b>14th – 18th September</b>	<b>The Rules of Risk Taking: Risk Appetite Explained</b> <i>"Define acceptable risk levels to protect value while enabling growth"</i>	<b>KES 85,000+VAT</b>	<b>Naivasha</b>
<b>13th – 16th October</b>	<b>Cyber Risk Management Training</b> <i>"Learn to navigate the digital threat landscape, turning cyber risks into strategic opportunities for resilience"</i>	<b>KES 75,000+VAT</b>	<b>Machakos</b>
<b>3rd – 6th November</b>	<b>Fraud Risk Management Training</b> <i>"Transform your approach to fraud: from reactive detection to proactive prevention and resilience."</i>	<b>KES 75,000+VAT</b>	<b>Nairobi</b>

#### BOOK NOW @

✉ [register@pinebridgeconsulting.co.ke](mailto:register@pinebridgeconsulting.co.ke)  
☎ 0742 929 285 🐦 @pinebridgeTC

**All courses are available online, on-site, and in-house upon request**

**\*Group Discounts Available\***



Approved  
FoRM Provider

